

Proofpoint Enterprise Archive

Deliver Modern, Secure, High-Performance Cloud Archiving

Key benefits

- Capture digital communications from a variety of sources
- Help ensure and demonstrate compliance with supervisory review
- Improve efficiency and reduce costs with built-in features for search, preserve and export
- Store communications in a secure, accessible, compliant, cloud-native archive
- Use machine learning to streamline e-discovery and supervision workflows

Proofpoint Enterprise Archive is a cloud-based archiving solution that simplifies legal discovery, regulatory compliance and data access for your users. It provides a central, searchable repository that supports a wide range of content types. So with our fully managed service, you can say goodbye to the headaches of managing an archive in-house.

With Enterprise Archive, all of your critical data is stored securely. You can:

- Quickly collect, search and retrieve that data on demand
- Establish and enforce policies and review processes for specific regulations and geographies
- Reduce the risk of costly fines, adverse inferences and a damaged reputation by streamlining data storage and access

Fast access for early case insight

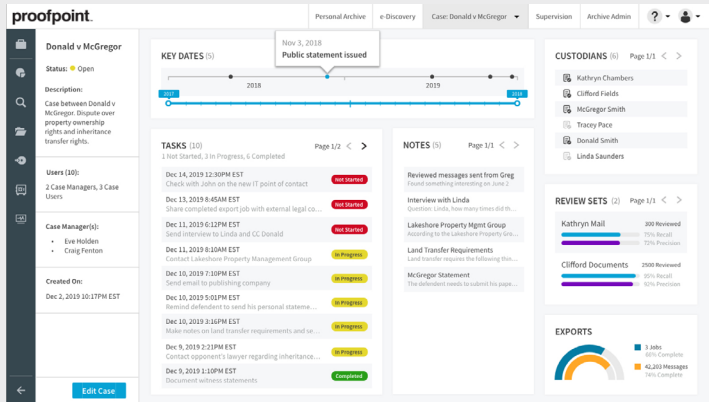
Enterprise Archive's high-performance search features give you insights to refine discovery strategies. Unified search gives you access to email, social-media and collaboration-platform content. It includes matches with over five hundred types of file attachments. We guarantee that you can easily get search results in near real time. Enterprise Archive has advantages when compared to using restored backup tapes, imaged hard drives and Microsoft Outlook PST files. It greatly reduces the time and cost of collecting, filtering and searching data.

Intelligence-driven discovery and rich data visualization

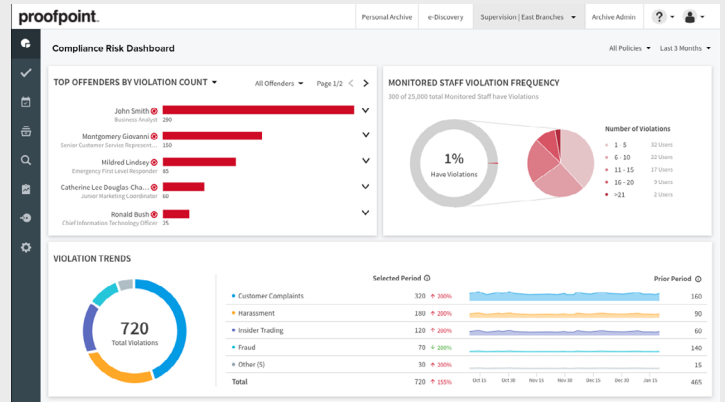
Our optional E-Discovery Analytics module gives you advanced insight into electronically stored information (ESI). And it helps you make better decisions.

You can use our interactive visuals to understand your search results. These will give you details about:

- Key parties
- Top terms
- Content distribution



Case Management with E-Discovery Analytics



Compliance Risk Dashboard with Intelligent Supervision

You can use Case Management to organize e-discovery elements into cases. It improves tracking, visibility and orchestration.

And with Technology Assisted Review (TAR), you can apply machine learning and past decisions to automate the identification of responsive content.

Fast self-service export

Enterprise Archive lets your legal team, compliance team and other authorized staff quickly export large volumes of content in a variety of file formats. These include PST, CSV, JSON, EDRM XML and Relativity load file.

You can export to address e-discovery requests and other internal investigations and even data analysis, such as machine learning training. There is no need for you to get help from professional services. So there are no additional fees. And the system can automatically upload the results to third-party service providers. That means you get lower costs and fewer delays and questions about compromised chain of custody.

Easy-to-enforce retention policies

It's important to consistently enforce information retention policies. Enterprise Archive includes policy management features. It helps you create, maintain and enforce these policies. Enforcement is automatic and based on rules you can configure. When data has reached the end of its retention period, high-performance disposition lets you quickly purge it.

Every policy change and disposition action is tracked for a truly defensible disposition process. Compliant storage helps you meet SEC 17a-4 rules.

Fully automated legal hold processes

With Enterprise Archive, your litigation hold process is simple, fully automated and included with your subscription. This means there are no extra licenses or fees required.

We offer unique features to help you manage your data-preservation requirements. For example, your legal team can preserve data in holds beyond the assigned retention periods. You can also assign staff access to search only within data assigned to a hold. And our easy-to-use interface provides full reporting and an audit trail.

Intelligent supervision for regulatory compliance

Proofpoint Intelligent Supervision is an optional module built to augment Enterprise Archive. With it, your compliance staff can systematically review messages from a variety of sources. These include email, social media, Bloomberg and instant messaging.

Our rich detection engine is combined with a library of over 200 detection scenarios. It can be augmented with our Intelligent Sampling to precisely identify items for review. The information is then automatically routed to the users who are authorized to take action.

Intelligent Supervision also provides dashboards and reports. It helps you manage the review process and keeps you ready for regulatory audits. You can also use Proofpoint NexusAI for Compliance. An add-on for Intelligent Supervision, it uses machine learning models to significantly reduce low-value supervision content.

Broad support for modern collaboration and social media content

Your organization relies on a wide variety of communication channels. That's why Enterprise Archive supports a wide range of content types. You know that we capture email from both on-premises Microsoft Exchange Servers and Microsoft 365. But with Proofpoint Content Capture, we can also populate the archive with data from virtually all key collaboration and social-media platforms.

Gain top security and scalability with our innovative cloud architecture

Enterprise Archive secures your data in the cloud while making sure you can reliably access it. You can take advantage of the high-performance, total scalability and cost-savings of cloud computing. You also get the highest levels of security and privacy without taking time from your IT team.

Failsafe archiving process

Unlike other cloud-based solutions, we give you two options to ensure complete capture.

- Enterprise Archive can use a “pull-and-confirm” method with an archive appliance that pulls messages from the journaling mailbox. Then it confirms that they are stored in the archive before removing them from the archive appliance.
- Our Compliance Gateway also supports an independent reconciliation process. It provides reporting to give auditors evidence of complete capture.

Search-performance guarantee

You can count on having reliable access to your archived data in seconds. We guarantee our search performance with a per-search SLA¹ that sees search results returned in seconds, regardless of the size of your archive .

Other competitive archives (that are deployed on-premises) slow down over time and require constant hardware upgrades as the data store grows. Enterprise Archive, on the other hand, scales up automatically without having to intervene.

Our grid storage architecture and parallel search technology ensure near real-time search performance. And it stays fast no matter how large your archive grows or how complex your searches get.

The most secure archive in the industry

With our patented Double Blind™ Key Architecture, we're the only archiving vendor that ensures data leaving your site is always encrypted. This means you get uninterrupted data security. Your data is protected both in transit from your data source on-premises or in the cloud and while under management within our cloud infrastructure.

To ensure protection, your encryption key is unique to you. You can manage the encryption key for full control over who can access your data within the archive. All of this adds up to complete data privacy and continuous security.

Experience a fully managed service

Delivering business-critical data is a full-time job for IT teams. With Enterprise Archive, we can take care of your archiving needs and let IT focus on more important projects. You can have peace of mind knowing that our fully-managed service has SSAE-18 SOC 2 Type II certification, not just for our physical facilities, but also for the service.

This includes our global data centers and world-class support and operations infrastructure. Enterprise Archive is available as a U.S. FedRAMP Authorized SaaS level, moderate impact cloud service. We proactively identify issues and take action. In many cases this occurs before you're even aware of the problem. And our market-leading customer renewal rates and customer satisfaction ratings reflect our responsive, seamless customer experience.

¹ As described in Proofpoint's Archive Search Performance SLA and Email Archiving Hosted Service SLA.

Features and Benefits Table

FEATURES		BENEFITS
Legal Discovery Readiness		Benefits for Legal
Legal hold management	Fully-automates legal hold management process	<ul style="list-style-type: none"> Respond quickly with consistently fast performance. Save money with built-in search, preservation and export features at no extra cost.
Early case insight	<p>Enables near real-time legal and investigative team insight with fast, self-service search</p> <p>Delivers detailed insights with optional E-Discovery Analytics module</p>	<ul style="list-style-type: none"> Identify critical data for downstream legal review more effectively. Reduce preservation risk with automated processes such as retention and disposition, legal hold, data export. Lower costs by using E-Discovery Analytics to process and analyze more data in-house
Regulatory Compliance		Benefits for Compliance
Retention policy management	Applies and enforces granular policies	<ul style="list-style-type: none"> Reduce compliance risk Meet specific geographic, industry, regulatory and/or business needs.
Intelligent Supervision	Enables supervisory review of communications	<ul style="list-style-type: none"> Save time using one screen to search, review, discover and protect critical data.
NexusAI for Compliance	Uses machine learning to reduce false positives	<ul style="list-style-type: none"> Simplify compliance with FINRA, SEC and IROC regulations. Save time by adjusting sampling rates and creating review sets to uncover more problematic or sensitive content and less low-risk content.
Dashboards and reporting	Consolidates and shows important information	<ul style="list-style-type: none"> Pinpoint major compliance risks and easily view violation trends, with drill-down for deeper insights.
Single “pane-of-glass” interface	Lets users perform multiple functions from one place	<ul style="list-style-type: none"> Improve response time to regulatory inquiries.
User Access		Benefits for Users
Intuitive interface for Outlook and mobile device access	Makes it easy for users to search for and retrieve archived content	<ul style="list-style-type: none"> Get enhanced productivity with data access from desktop, laptop, tablet, phone. Keep context with the familiar Outlook folder structure. See relevance right away with keyword highlighting in results.
Folder Sync	Preserves folder structure to provide greater context for archive search results	<ul style="list-style-type: none"> Enhance efficiency by saving common searches to run at a later time. Retrieve better results with extensive filtering.
Innovative Cloud Architecture		Benefits for IT
Grid architecture	Enables search in seconds regardless of archived volume or complexity of search query	<ul style="list-style-type: none"> Remove ongoing management hassles with easy deployment and management. Lower TCO versus legacy on-premises archives.
DoubleBlind Key Architecture	Separates encryption keys from encrypted data	<ul style="list-style-type: none"> Get uninterrupted data security and privacy. Enhance IT productivity. Control data access.

LEARN MORE

For more information, visit <https://www.proofpoint.com/us/products/archiving-and-compliance/ediscovery-analytics>.

ABOUT PROOFPOINT

Proofpoint, Inc. (NASDAQ: PFPT) is a leading cybersecurity and compliance company that protects organizations’ greatest assets and biggest risks: their people. With an integrated suite of cloud-based solutions, Proofpoint helps companies around the world stop targeted threats, safeguard their data, and make their users more resilient against cyber attacks. Leading organizations of all sizes, including more than half of the Fortune 1000, rely on Proofpoint for people-centric security and compliance solutions that mitigate their most critical risks across email, the cloud, social media, and the web. More information is available at www.proofpoint.com.

©Proofpoint, Inc. Proofpoint is a trademark of Proofpoint, Inc. in the United States and other countries. All other trademarks contained herein are property of their respective owners. Proofpoint.com