

Data Sheet

# Proofpoint Prism Investigator

An AI-First Platform for Agentic Investigations



## Key benefits

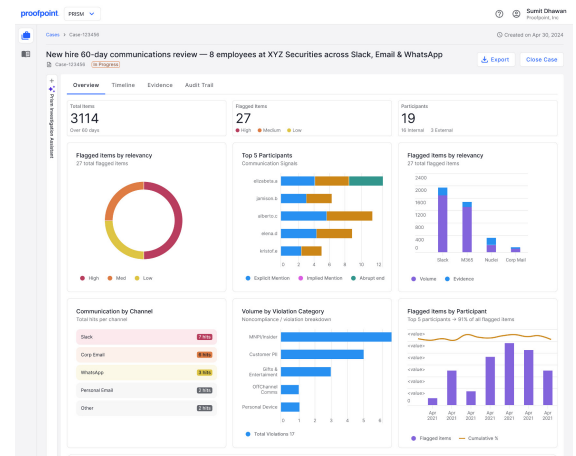
- Collect and correlate communications, trades, HR data, logs, and other signals across sources
- Start investigations in natural language instead of building search syntax
- Empower compliance and legal teams to investigate with less specialist support
- Generate narrative summaries, timelines, network views, and evidence-backed findings automatically
- Preserve prompts, reasoning, guardrails, and approvals in a defensible audit trail

Investigations in regulated and highly litigious organizations are slowed by fragmented evidence, manual search cycles, and rising expectations for defensible outcomes. Relevant evidence may exist across email, chat, collaboration platforms, mobile channels, archives, and business systems, but reconstructing what happened is still too often search-driven, person-dependent, and difficult to defend. Proofpoint Prism Investigator is a fully autonomous, agentic investigations platform built on Nuclei technology that helps compliance and legal teams conduct faster, more consistent, and more defensible investigations. From a natural-language objective, it gathers and correlates evidence across sources, identifies key risks, reconstructs the timeline, and produces transparent, auditable outputs.

## More than just Search driven Investigations

Prism Investigator helps automate the work that would otherwise require skilled analysts to hunt for source data, reconcile relationships, and assemble the story manually. It is designed to help less specialized users perform sophisticated investigations with structured AI guidance while maintaining defensibility.

- Scopes cases by goal, users, sources, and time frame before full execution begins
- Shows pipeline progress across orchestration, data gathering, analysis, processing, and report generation
- Returns a written case summary, network relationships, and key risk themes
- Moves investigators naturally from narrative, to timeline, to evidence



**Figure 1:** Proofpoint Prism Investigator turns investigation results into an immediate, evidence-backed understanding of the case, highlighting key risks, people, channels, and findings in one clear view.

## Archive-Agnostic integration built for expansion

Prism Investigator is designed to integrate directly with multiple sources and expand over time. It can bring together content from Microsoft M365, Google mail, Proofpoint Archive, Nuclei Suite, and other connected sources while correlating trade data, HR data, logs, position data, market data, and other records with communications.

## Broad Support for Investigations

- Email, chat, collaboration, mobile, meetings, files, and shared content support
- Trade data, logs, HR records, position data, market data, and related activity across systems captured and analyzed
- Reduce investigations from weeks to minutes
- Minimize the expertise required to perform detailed investigations

## Built for Compliance and Legal

- Uses explainable AI with preserved reasoning and clear guardrails
- Supports lookbacks, trade reconstruction, and regulator or HR requests
- Extends investigations beyond monitored data sets to include related business records
- Creates regulator-ready and litigation-ready outputs tied directly back to evidence

## Defensible Outputs

- A full agentic investigations platform and a differentiated operating model
- Narrative case summaries and chronological timelines
- Linked evidence inventory, network views, and preserved audit history
- Natural-language intent turned into explainable, evidence-backed findings



**Figure 2:** Proofpoint Prism Investigator reconstructs the events chronologically.

# proofpoint.

**About Proofpoint, Inc.** Proofpoint, Inc. is a global leader in human- and agent-centric cybersecurity, securing how people, data and AI agents connect across email, cloud and collaboration tools. Proofpoint is a trusted partner to over 80 of the Fortune 100, over 10,000 large enterprises, and millions of smaller organizations in stopping threats, preventing data loss, and building resilience across people and AI workflows. Proofpoint's collaboration and data security platform helps organizations of all sizes protect and empower their people while embracing AI securely and confidently. Learn more at [www.proofpoint.com](http://www.proofpoint.com).

Connect with Proofpoint: [LinkedIn](#)

Proofpoint is a registered trademark or trademark of Proofpoint, Inc. in the U.S. and/or other countries. All other trademarks contained herein are the property of their respective owners.

**DISCOVER THE PROOFPOINT PLATFORM →**